

# General Motors Reprogramming User Guide

**Version 2.0**

**June 2014**

## Foreword

This document describes DG Technologies VSI-2534, a SAE J2534 Pass-Thru device, with its primary purpose to program automotive ECUs (Electronic Control Units). It provides module programming for development, end-of-line testing and reprogramming. This document shows the general procedures for purchasing, installing and using the OEM programming application with the VSI-2534 Pass-Thru device. Because the procedures are generic in nature, this may not capture every screen or every scenario for each and every vehicle. For any screen, read the directions on the screen and proceed as indicated. Programming is vehicle specific and directions may vary. All documentation is subject to change at any time. Any and all OEM documentation should be read in its entirety along with the vehicle Service Manual prior to programming.

The VSI-2534 is also useful for vehicle diagnostics, development, general design, hardware in-the-loop simulation and anywhere communications with a vehicle network are required.

## Table of Contents

- Registration & Subscription (pgs. 2-7)
- General Motors Reprogramming Guide (pgs. 8-17)

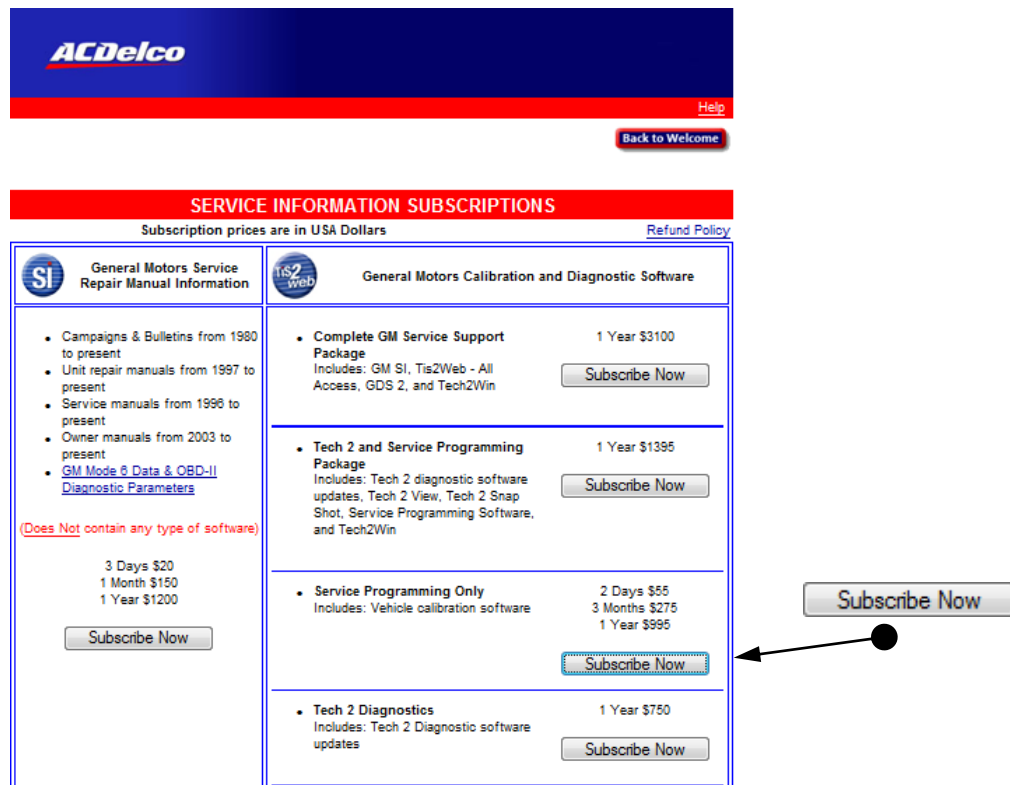
© 2006 - 2014 Dearborn Group, Inc.  
33604 West Eight Mile Road  
Farmington Hills, MI 48335  
Phone (248) 888-2000 • Fax (248) 888-9977

This document is copyrighted by Dearborn Group, Inc. Permission is granted to copy all and/or entire page portions of this manual, provided such copies are for use with the product provided by DG Technologies (Dearborn Group, Inc.) or any of its affiliates, and that each instance of DG Technologies, Dearborn Group, Inc., and our website [www.dgtech.com](http://www.dgtech.com) remains on all copies as on the original.

## Registration & Subscription (pg. 2-16)




- In Internet Explorer, go to <https://www.acdelcotds.com> and then click on “Service and Programming Information”.



SI	General Motors Service Repair Manual Information	Tis2web	General Motors Calibration and Diagnostic Software
	<ul style="list-style-type: none"> <li>• Campaigns &amp; Bulletins from 1980 to present</li> <li>• Unit repair manuals from 1997 to present</li> <li>• Service manuals from 1996 to present</li> <li>• Owner manuals from 2003 to present</li> <li>• <a href="#">GM Mode 6 Data &amp; OBD-II Diagnostic Parameters</a></li> </ul> <p>(Does Not contain any type of software)</p> <p>3 Days \$20 1 Month \$150 1 Year \$1200</p> <p><a href="#">Subscribe Now</a></p>		<ul style="list-style-type: none"> <li>• <b>Complete GM Service Support Package</b> 1 Year \$3100 Includes: GM SI, Tis2Web - All Access, GDS 2, and Tech2Win <a href="#">Subscribe Now</a></li> <li>• <b>Tech 2 and Service Programming Package</b> 1 Year \$1395 Includes: Tech 2 diagnostic software updates, Tech 2 View, Tech 2 Snap Shot, Service Programming Software, and Tech2Win <a href="#">Subscribe Now</a></li> <li>• <b>Service Programming Only</b> 2 Days \$55 Includes: Vehicle calibration software 3 Months \$275 1 Year \$995 <a href="#">Subscribe Now</a></li> <li>• <b>Tech 2 Diagnostics</b> 1 Year \$750 Includes: Tech 2 Diagnostic software updates <a href="#">Subscribe Now</a></li> </ul>

- Click on “Subscribe Now” for Service Programming Only.

This document is copyrighted by Dearborn Group, Inc. Permission is granted to copy all and/or entire page portions of this manual, provided such copies are for use with the product provided by DG Technologies (Dearborn Group, Inc.) or any of its affiliates, and that each instance of DG Technologies, Dearborn Group, Inc., and our website [www.dgtech.com](http://www.dgtech.com) remains on all copies as on the original.



**ACDelco**

[Home](#)

[Back to Welcome](#)

**USER LOGIN**

Please Input your Login Name and Password below to Enter.

Login Name

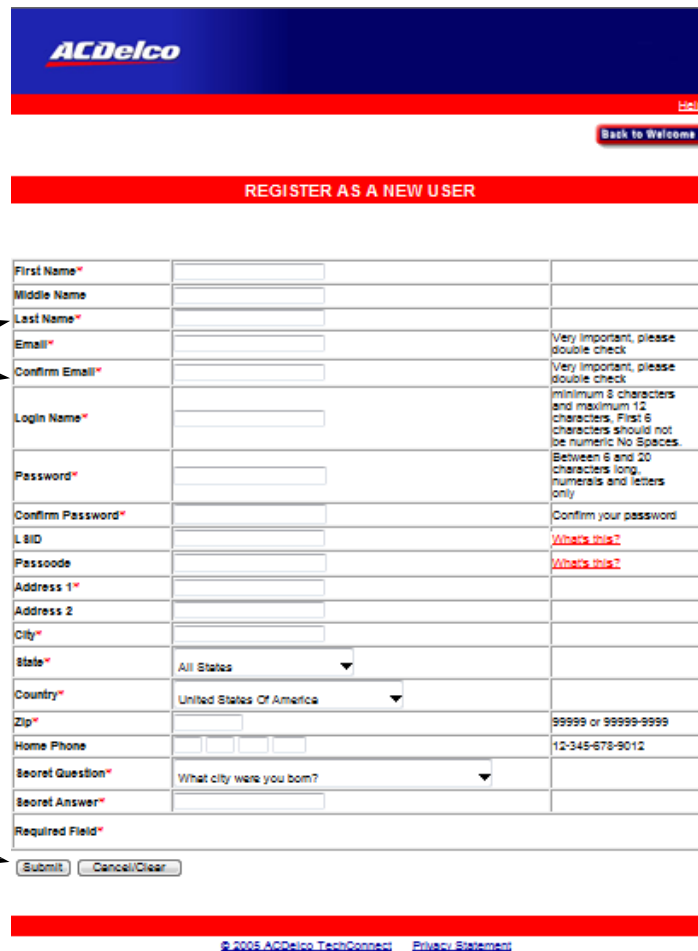
Password

Not a registered user [click here](#)

If you need assistance within the US or Canada please contact 1-800-625-5858 prompt #3.  
In Australia Use 0011-1-800-625-5858 prompt #3.  
If you have forgot your password please [click here](#).

[© 2005 ACDelco TechConnect](#) [Privacy Statement](#)

- Click on “[click here](#)”



**ACDelco**

[Home](#)

[Back to Welcome](#)

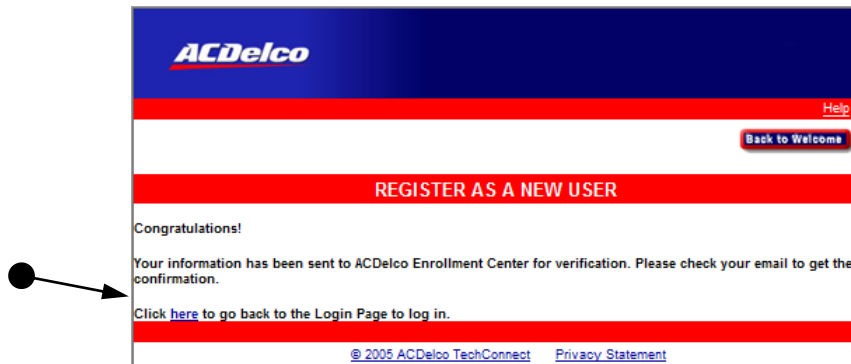
**REGISTER AS A NEW USER**

First Name*	<input type="text"/>	
Middle Name	<input type="text"/>	
Last Name*	<input type="text"/>	
Email*	<input type="text"/>	Very Important, please double check
Confirm Email*	<input type="text"/>	Very Important, please double check
Login Name*	<input type="text"/>	minimum 8 characters and maximum 12 characters. First 6 characters should not be numeric. No Spaces.
Password*	<input type="password"/>	Between 6 and 20 characters long, numerals and letters only
Confirm Password*	<input type="password"/>	Confirm your password
L-BID	<input type="text"/>	<a href="#">What's this?</a>
Passcode	<input type="text"/>	<a href="#">What's this?</a>
Address 1*	<input type="text"/>	
Address 2	<input type="text"/>	
City*	<input type="text"/>	
State*	All States <input type="text"/>	
Country*	United States Of America <input type="text"/>	
Zip*	<input type="text"/>	99999 or 99999-9999
Home Phone	<input type="text"/>	12-345-678-9012
Secret Question*	What city were you born? <input type="text"/>	
Secret Answer*	<input type="text"/>	
Required Field*		

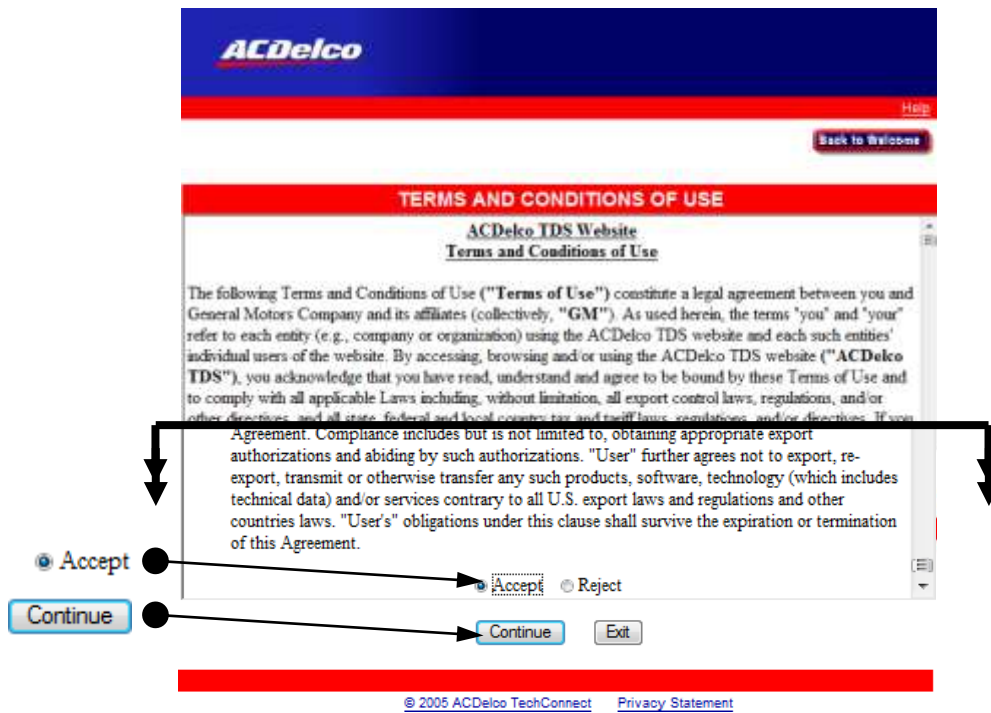
[© 2005 ACDelco TechConnect](#) [Privacy Statement](#)

- Note: “Login Name” and “Password” is case-sensitive.
- Fill in information as required and click on “Submit”.

This document is copyrighted by Dearborn Group, Inc. Permission is granted to copy all and/or entire page portions of this manual, provided such copies are for use with the product provided by DG Technologies (Dearborn Group, Inc.) or any of its affiliates, and that each instance of DG Technologies, Dearborn Group, Inc., and our website [www.dgtech.com](http://www.dgtech.com) remains on all copies as on the original.

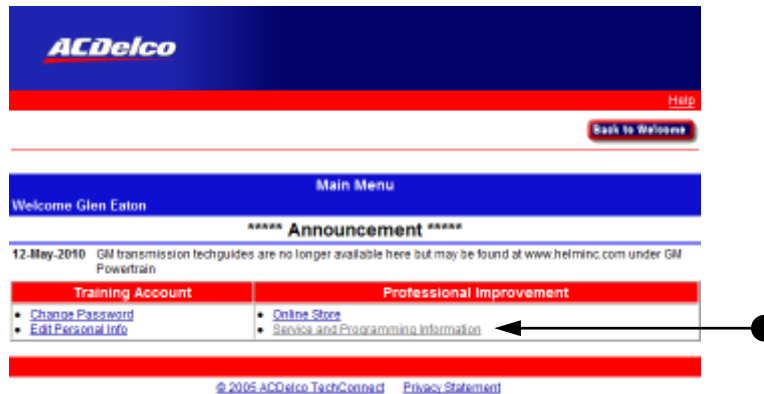


- An email will be sent to the email address specified. Click “[here](#)” to go back to the Login Page to log in and log in as requested.

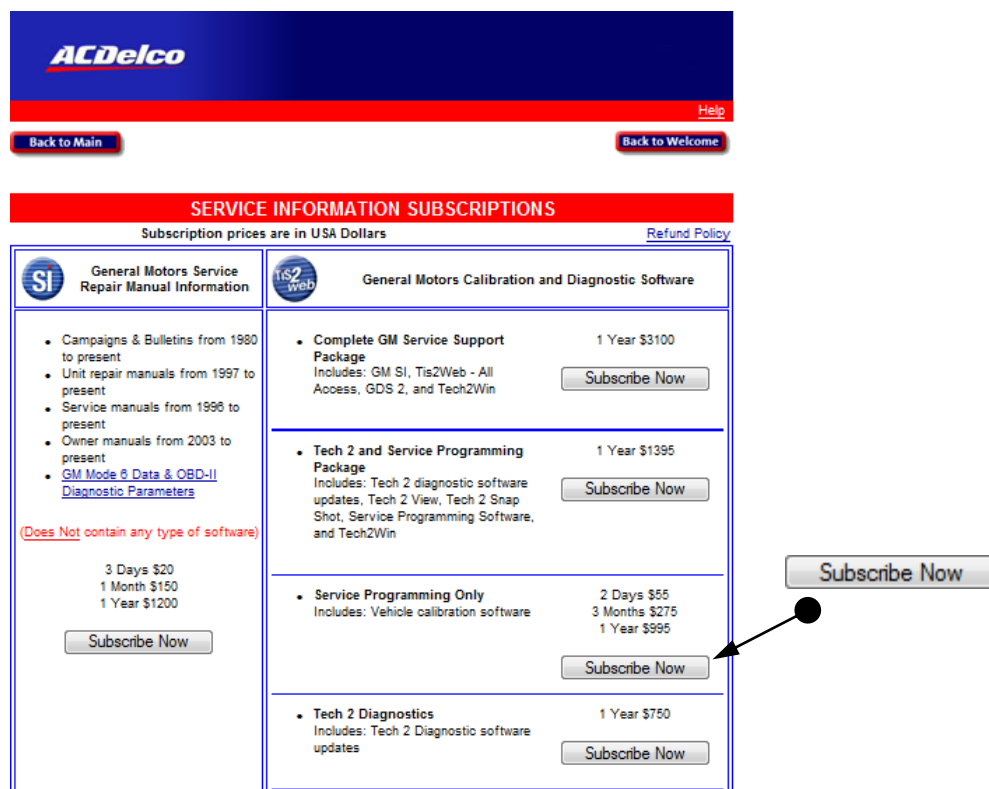


- Read, scroll to bottom of “Terms and Conditions of Use”. If agreeable, select “Accept” and then “Continue”.

This document is copyrighted by Dearborn Group, Inc. Permission is granted to copy all and/or entire page portions of this manual, provided such copies are for use with the product provided by DG Technologies (Dearborn Group, Inc.) or any of its affiliates, and that each instance of DG Technologies, Dearborn Group, Inc., and our website [www.dgtech.com](http://www.dgtech.com) remains on all copies as on the original.

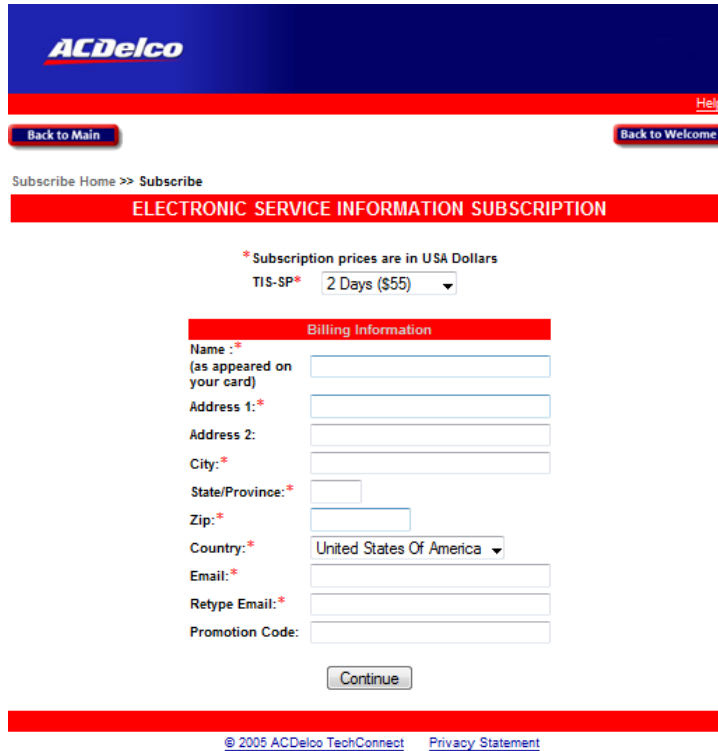


- Click on “Service and Programming Information”.



- Locate “Service Programming Only” and click on the “Subscribe Now” shown. The one shown is for the reprogramming data for J2534 devices.

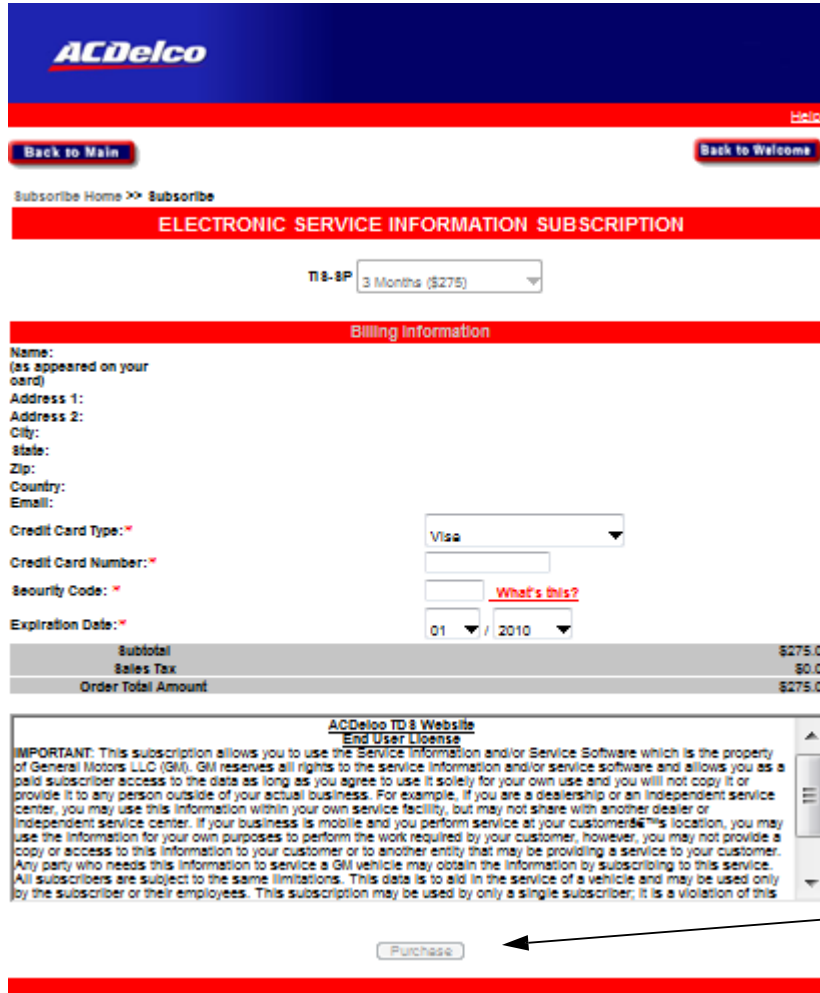
This document is copyrighted by Dearborn Group, Inc. Permission is granted to copy all and/or entire page portions of this manual, provided such copies are for use with the product provided by DG Technologies (Dearborn Group, Inc.) or any of its affiliates, and that each instance of DG Technologies, Dearborn Group, Inc., and our website [www.dgtech.com](http://www.dgtech.com) remains on all copies as on the original.



The screenshot shows the AC Delco website interface for an electronic service information subscription. At the top, there is a blue header with the AC Delco logo and a red navigation bar with 'Back to Main' and 'Back to Welcome' buttons. Below this is a breadcrumb trail: 'Subscribe Home >> Subscribe'. The main heading is 'ELECTRONIC SERVICE INFORMATION SUBSCRIPTION'. A note states '\* Subscription prices are in USA Dollars'. Below this, there is a dropdown menu for 'TIS-SP\*' currently set to '2 Days (\$55)'. The 'Billing Information' section contains several fields: 'Name :\*' (with subtext '(as appeared on your card)'), 'Address 1: \*', 'Address 2:', 'City: \*', 'State/Province: \*', 'Zip: \*', 'Country: \*' (with a dropdown menu currently showing 'United States Of America'), 'Email: \*', 'Retype Email: \*', and 'Promotion Code:'. A 'Continue' button is located at the bottom of the form. At the very bottom of the page, there is a red bar with copyright information: '@ 2005 AC Delco TechConnect' and a link to 'Privacy Statement'.

[Continue](#)

- Click on down arrow and select term of service (2-day, 3 Month or 1 Year), “Retype Email” and select “Continue”.



**ACDelco**

[Back to Main](#) [Back to Welcome](#)

Subscribe Home >> [Subscribe](#)

**ELECTRONIC SERVICE INFORMATION SUBSCRIPTION**

Term-SP: 3 Months (\$275)

**Billing Information**

Name:  
(as appeared on your card)

Address 1:  
Address 2:  
City:  
State:  
Zip:  
Country:  
Email:

Credit Card Type: \* Visa

Credit Card Number: \*

Security Code: \* [What's this?](#)

Expiration Date: \* 01 / 2010

Subtotal	\$275.00
Sales Tax	\$0.00
<b>Order Total Amount</b>	<b>\$275.00</b>

**ACDelco TD & Website End User License**

IMPORTANT: This subscription allows you to use the Service Information and/or Service Software which is the property of General Motors LLC (GM). GM reserves all rights to the service information and/or service software and allows you as a paid subscriber access to the data as long as you agree to use it solely for your own use and you will not copy it or provide it to any person outside of your actual business. For example, if you are a dealership or an independent service center, you may use this information within your own service facility, but may not share with another dealer or independent service center. If your business is mobile and you perform service at your customer's location, you may use the information for your own purposes to perform the work required by your customer, however, you may not provide a copy or access to this information to your customer or to another entity that may be providing a service to your customer. Any party who needs this information to service a GM vehicle may obtain the information by subscribing to this service. All subscribers are subject to the same limitations. This data is to aid in the service of a vehicle and may be used only by the subscriber or their employees. This subscription may be used by only a single subscriber; it is a violation of this

**Accept**

**Purchase**

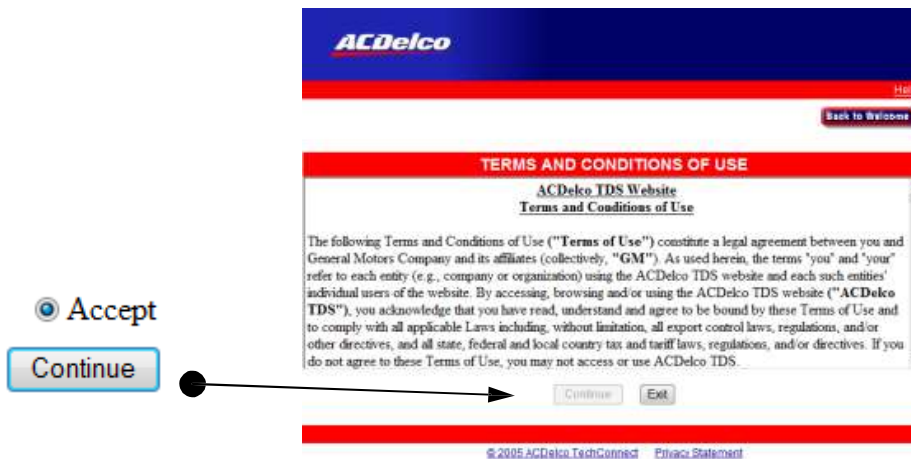
**Purchase**

- Fill out Credit Card information, scroll to bottom of “User License” and select “Accept”, then click on “Purchase”.
- The next screen will indicate your registration success and an email will be sent for confirmation.

## General Motors Programming (pgs. 8-17)



- In Internet Explorer, go to: <http://www.acdelcotds.com/acdelco/action/home> and log on.



- Scroll to bottom of Terms and Conditions of Use. If agreeable, select "Accept" and then "Continue".



- Click on "Service and Programming Information".

This document is copyrighted by Dearborn Group, Inc. Permission is granted to copy all and/or entire page portions of this manual, provided such copies are for use with the product provided by DG Technologies (Dearborn Group, Inc.) or any of its affiliates, and that each instance of DG Technologies, Dearborn Group, Inc., and our website [www.dgtech.com](http://www.dgtech.com) remains on all copies as on the original.





- Click on “Tis2Web – Service Programming”.



- Click on the “Service Programming System (SPS)” icon.



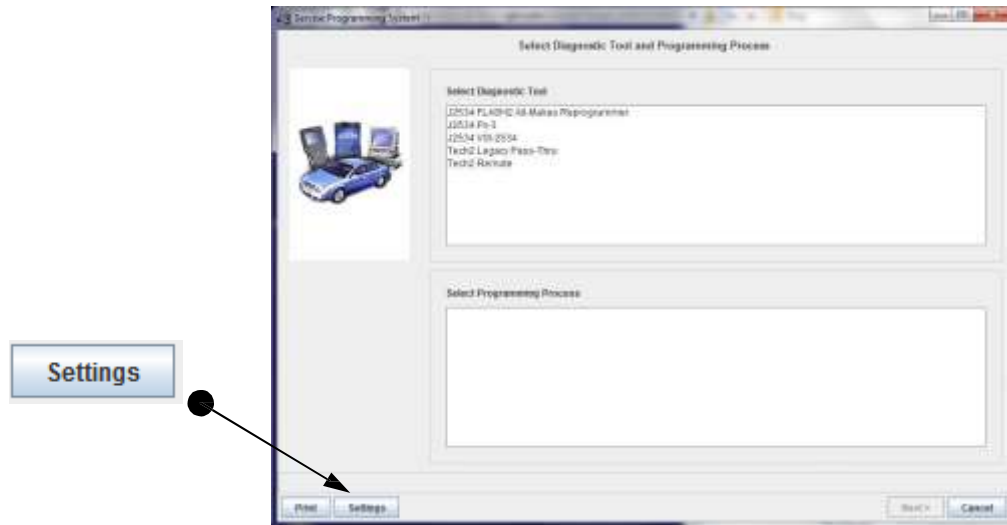
- Click on “Start SPS”.



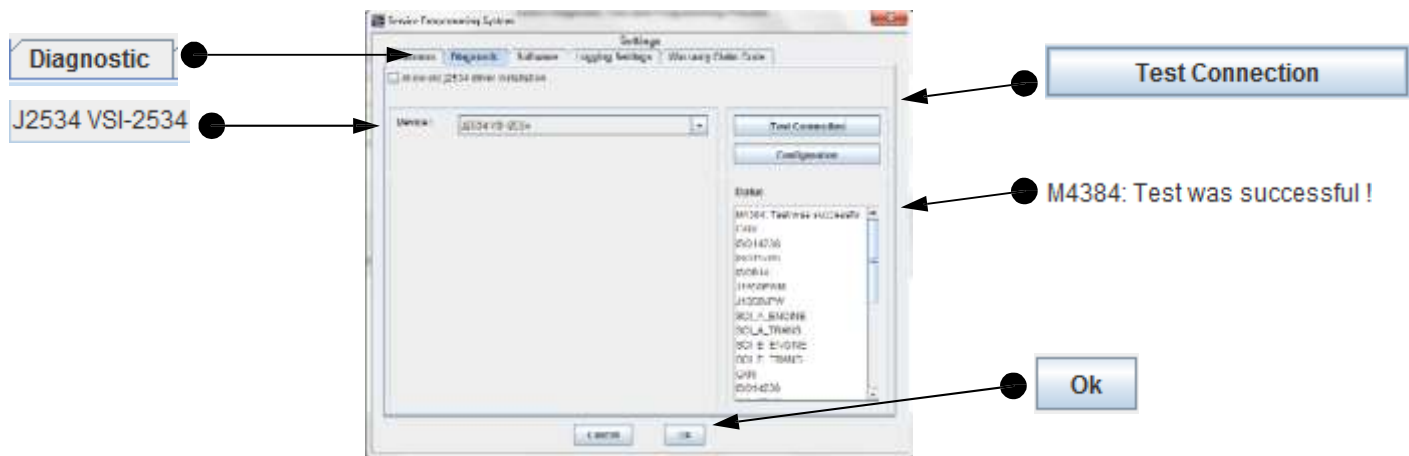
This document is copyrighted by Dearborn Group, Inc. Permission is granted to copy all and/or entire page portions of this manual, provided such copies are for use with the product provided by DG Technologies (Dearborn Group, Inc.) or any of its affiliates, and that each instance of DG Technologies, Dearborn Group, Inc., and our website [www.dgtech.com](http://www.dgtech.com) remains on all copies as on the original.

- Click on “Skip”. A new window will open. (Note: these options are for dealership tools.)

## (One-Time Initial Set-up)

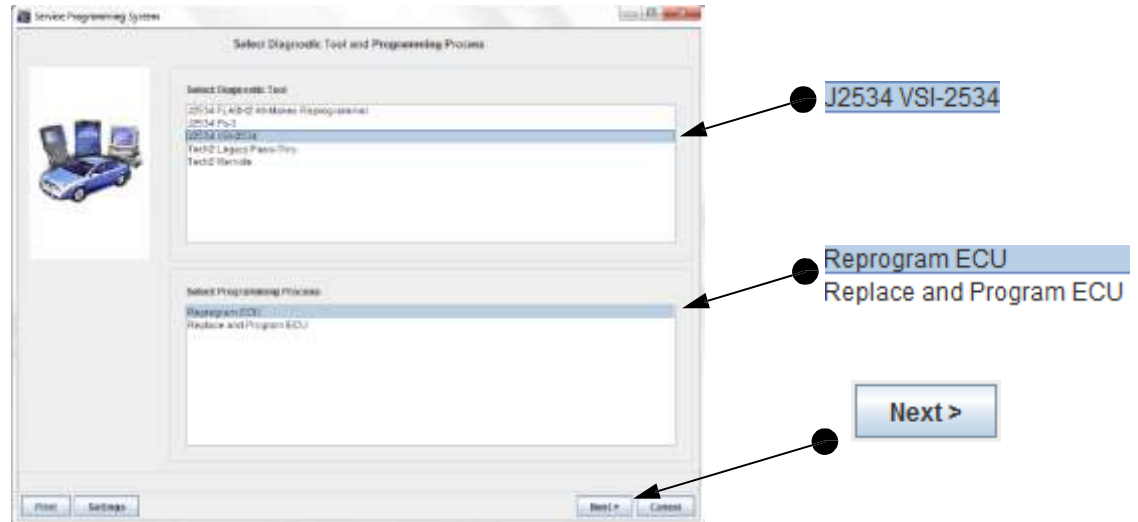


- Click on “Settings”.



- Click on the “Diagnostic” tab, make sure “J2534 VSI-2534” is selected as the “Device” and click on “Test Connection”. You should see “M4384: Test was successful”. If not, close out everything and try again. If this second attempt does not resolve the issue, there is something that is occupying one of the Com ports on the PC. A couple things that may be occupying a Com port are a modem or “sync” software, such as: HotSync<sup>®</sup>. These must be completely removed/uninstalled and then try again. You must get the “Test was successful” message. Click “OK” when done.

This document is copyrighted by Dearborn Group, Inc. Permission is granted to copy all and/or entire page portions of this manual, provided such copies are for use with the product provided by DG Technologies (Dearborn Group, Inc.) or any of its affiliates, and that each instance of DG Technologies, Dearborn Group, Inc., and our website [www.dgtech.com](http://www.dgtech.com) remains on all copies as on the original.

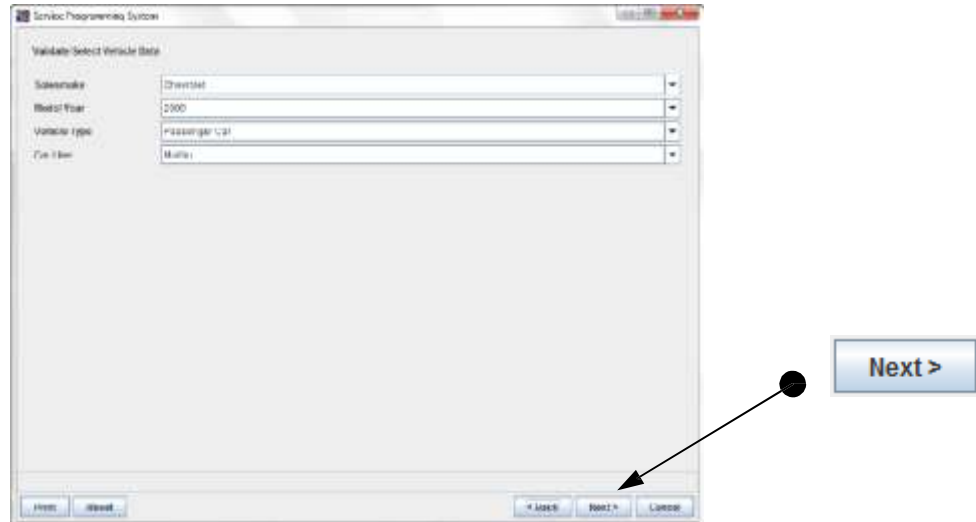


- Select “J2534 VSI-2534”, then select:
  - “Reprogram ECU” if reprogramming the original ECU.
  - “Replace and Program ECU” if programming a new or replacement ECU. If replacing an ECU and the original ECU is available, leave that ECU installed until prompted to replace. This will ensure that any specific customer preferences that may be stored in that ECU are transferred to the new or replacement ECU.
- Click “Next”.

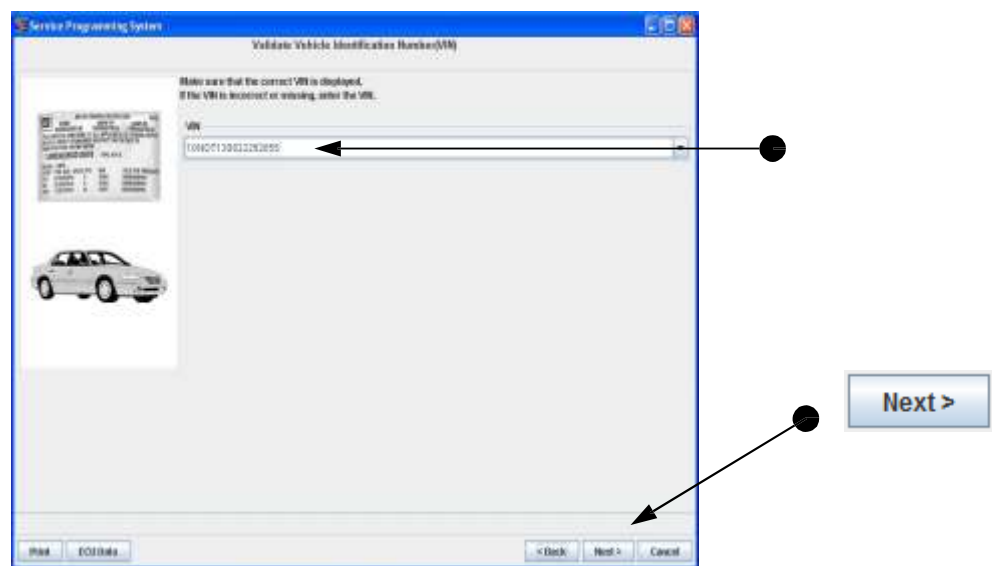


- Read this screen, ensure conditions are met and click “Next”.

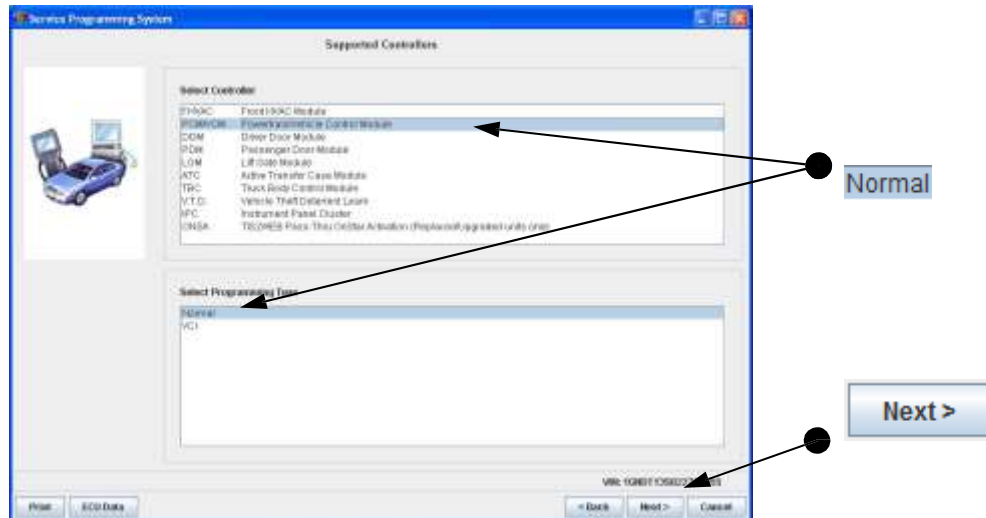
This document is copyrighted by Dearborn Group, Inc. Permission is granted to copy all and/or entire page portions of this manual, provided such copies are for use with the product provided by DG Technologies (Dearborn Group, Inc.) or any of its affiliates, and that each instance of DG Technologies, Dearborn Group, Inc., and our website [www.dgtech.com](http://www.dgtech.com) remains on all copies as on the original.



- Identify vehicle by selecting “Salesmake”, “Model Year”, “Vehicle Type” and “Car Line” via the drop-down arrows. Requirements may vary. Make sure all options are complete. Then, click “Next”.

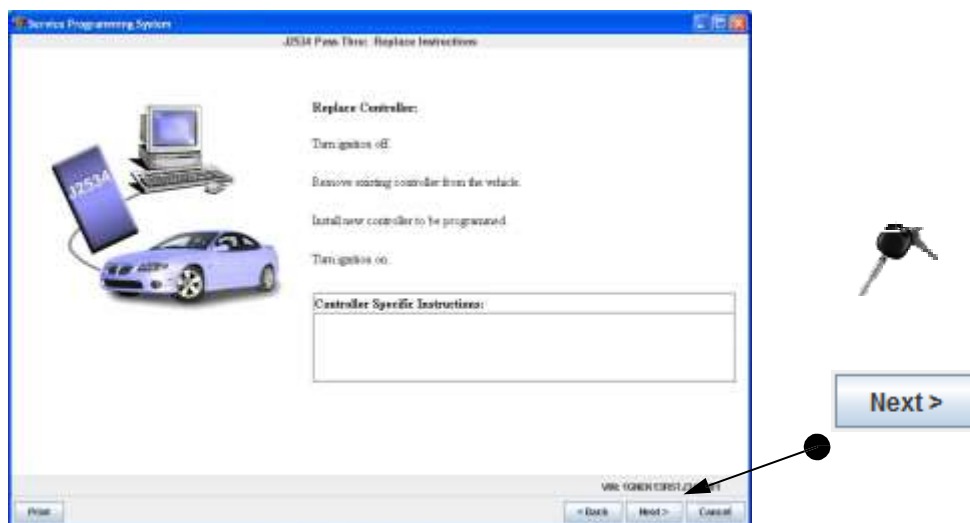


- Make sure the correct VIN for the vehicle is displayed and click “Next”.



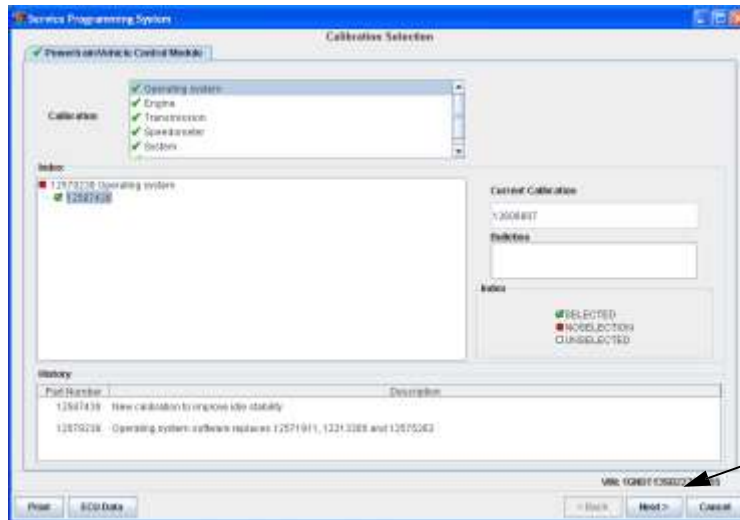
- Select desired “Controller”, or ECU to be programmed, select “Normal”, and then click “Next”.

**Before continuing, please note:** Programming different modules may show the remaining screens differently. Simply read and follow on-screen instructions as requested and respond accordingly. The following screens are typical of a PCM/VCM event.

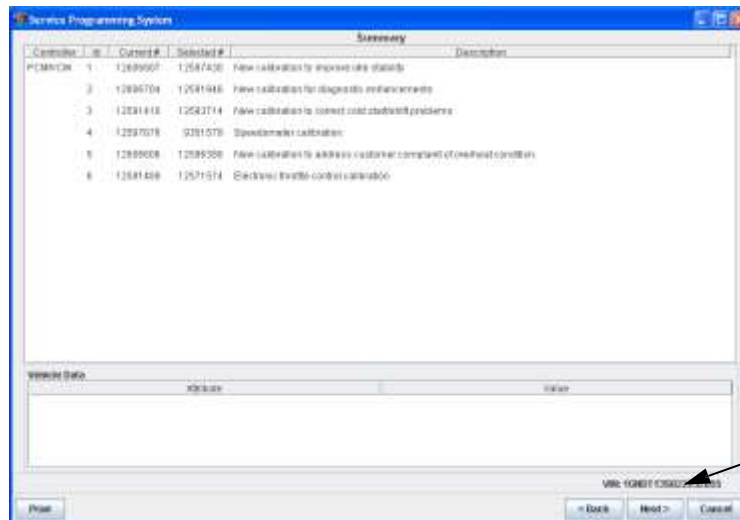


- Options:
  - Make note of any “Controller Specific Instructions” for possible later use.
  - If “Reprogram ECU” was selected earlier for reprogramming the original ECU, ignore this screen and just click “Next”.
  - If “Replace and Program ECU” was selected earlier for programming a new or replacement ECU, follow the steps noted on this screen entirely, and then click “Next”.

This document is copyrighted by Dearborn Group, Inc. Permission is granted to copy all and/or entire page portions of this manual, provided such copies are for use with the product provided by DG Technologies (Dearborn Group, Inc.) or any of its affiliates, and that each instance of DG Technologies, Dearborn Group, Inc., and our website [www.dgtech.com](http://www.dgtech.com) remains on all copies as on the original.

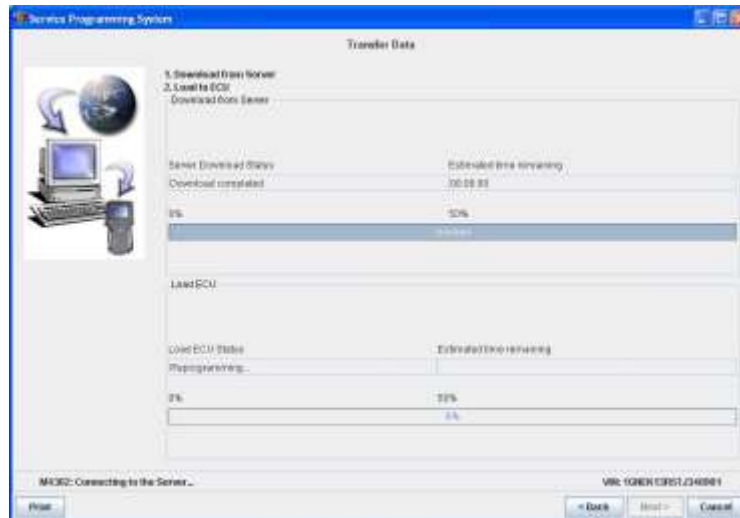


- Refer to Current Calibration and Index shown. Make appropriate Calibration selections where required and click on “Next”.

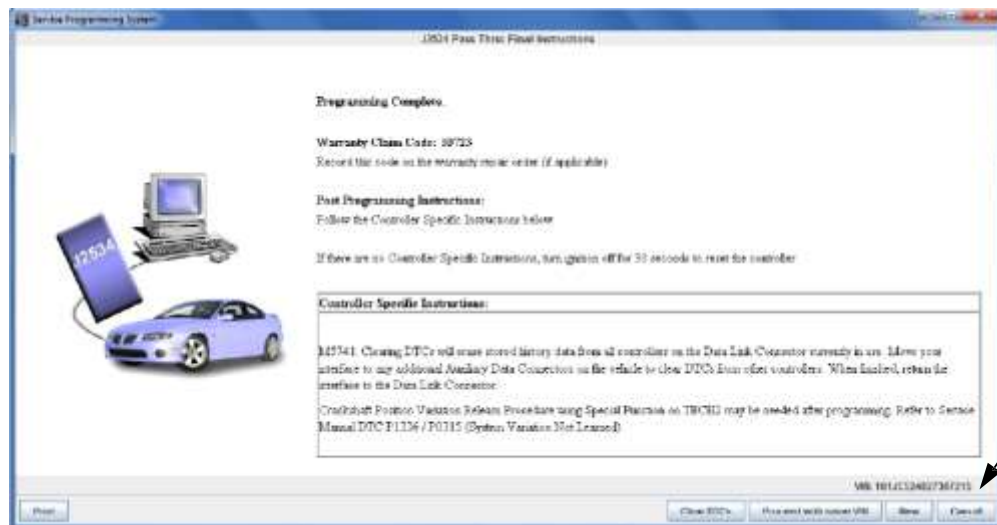


- Summary of calibration selections made are listed. Click “Next”...

This document is copyrighted by Dearborn Group, Inc. Permission is granted to copy all and/or entire page portions of this manual, provided such copies are for use with the product provided by DG Technologies (Dearborn Group, Inc.) or any of its affiliates, and that each instance of DG Technologies, Dearborn Group, Inc., and our website [www.dgtech.com](http://www.dgtech.com) remains on all copies as on the original.



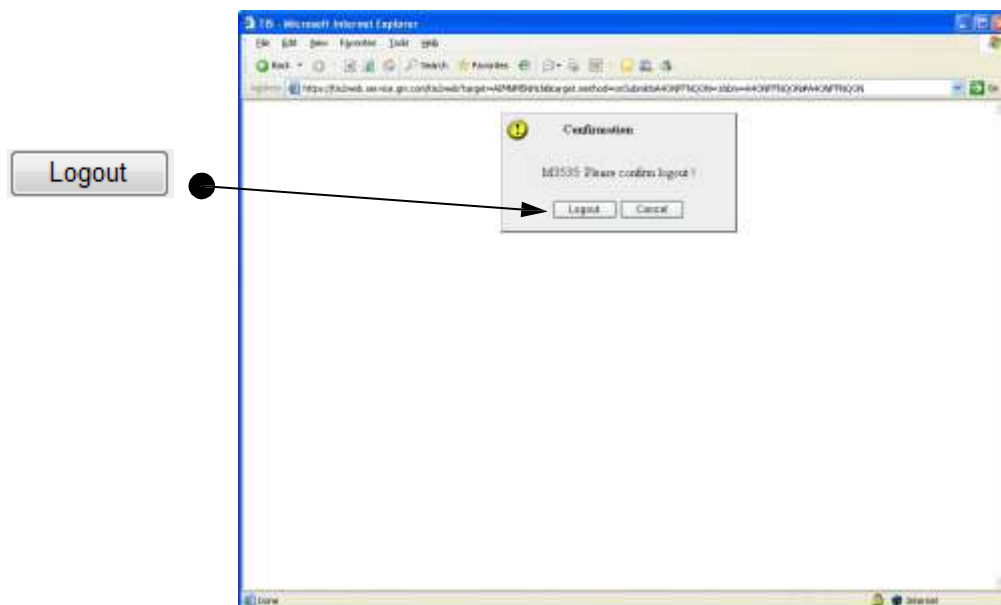
- Reprogramming screen. First downloading, then reprogramming...



- Programming Complete. Note "Controller Specific Instructions", if any.
- Clear DTC's if desired.
- Proceed with same VIN is not applicable.
- If you have another GM vehicle to program, you may click on "New".
- Click "Cancel" to close the program.

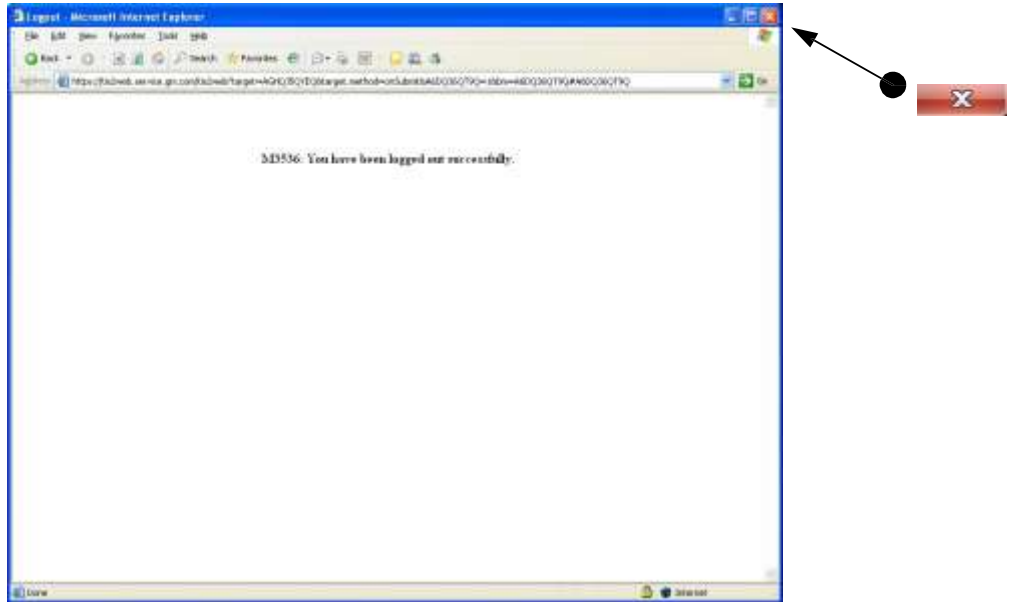


- Close GM TIS 2 WEB application by clicking on the “open door”.



- Click “Logout”.





- Close “Internet Explorer” by clicking on the red “x” as shown.