

# DPA 5



DG TECHNOLOGIES  
Vehicle Network Solutions

A comprehensive diagnostic and reprogramming device connecting heavy-duty, medium-duty and light-duty technicians to vehicle networks for service bay repair and maintenance.

## Differentiation

**The fastest, most reliable and most durable adapter on the market with heavy, medium and light duty coverage.**

## Key Features

- TMC RP1210 A/B/C and SAE J2534-1 Compliance
- RP1210 AND J2534 Troubleshooting Applications
- 2 CAN Channels for 2013 and newer Volvos and Freightliner Cascadia Models
- USB and Bluetooth Wireless Connectivity
- 2 year standard warranty with additional 3rd and 4th year options

## Benefits

- Greatly reduces reprogramming and diagnostic sessions
- Capable of running multiple applications simultaneously
- Compatible with a broad spectrum of OEM software programs
- Includes sample source code to support engineering development
- Diagnostic software included in the kit
- Optional OBDII automotive diagnostics software (Palmer ScanXL)



# DPA 5 Specifications, DG Diagnostics

## Protocols Supported

### RP1210:

- J1939
  - Auto Baud Capable
  - 250k, 500k
- J1708 / J1587
- CAN/ISO11898
  - Auto Baud Capable
  - 125k, 250k, 500k, 1000k
- J1850 (VPW - GM Class II)
- ISO 15765
- ISO 9141 / KWP2000

### J2534:

- CAN/ISO 11898
- J1850 VPW (GM Class II)
- ISO 15765-4
- GMLAN (HSCAN, SWCAN)
- ISO 14230 (KWP2000)
- ISO 9141-2
- J1708/J1587
- J1939

## Commercial Vehicle Applications Supported

- Allison DOC
- Bendix ACOM
- Caterpillar Electronic Technician
- Cummins Insite
- Cummins PowerSpec
- Dana Diagnostic Tool
- Detroit Diesel Diagnostic Link
- Detroit Diesel Reprogramming Station
- Eaton ServiceRanger
- Freightliner ServiceLink
- International Diamond Logic Builder
- International InTune
- International Master Diagnostics
- International ServiceMaxx
- Mack VCADS/PTT
- Meritor-WABCO Toolbox
- Mitchell1 RepairConnect
- Vansco VMMS
- Volvo VCADS/PTT
- ZF-Meritor TransSoft

## Automotive Vehicle Applications Supported

- General Motors TIS2Web
- Ford Module Programming (FMP)
- Chrysler J2534 Application
- Toyota TIS (Technical Information System)
- Honda Service Express
- Mazda Module Programming (MMP)
- Volkswagen Erwin
- Audi Erwin
- Nissan J2534 ECU Reprogramming Software (NERS)
- RA Consulting Silver Scan Tool

## DG Diagnostic Software

### Heavy Duty - OBDII

Simplifies and lowers the cost of service bay diagnostics operations by providing the most common diagnostic features!

## Optional Cables

14-Pin Volvo Construction Cable



Volvo Vehicle Cable Kit



Komatsu Construction Cable



8-Pin Volvo Construction Cable

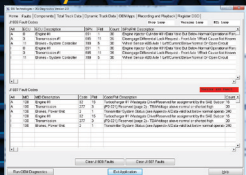


Cat Cable

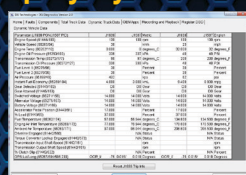


J1939 triangular Deutsch connector

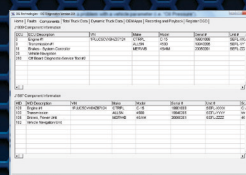
## Read/Clear Codes



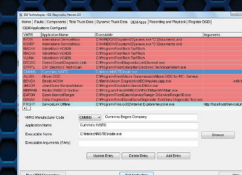
## Display Dynamic Data



## Total Vehicle Data



## Connect with OEM Apps



## Vehicle Data Report

